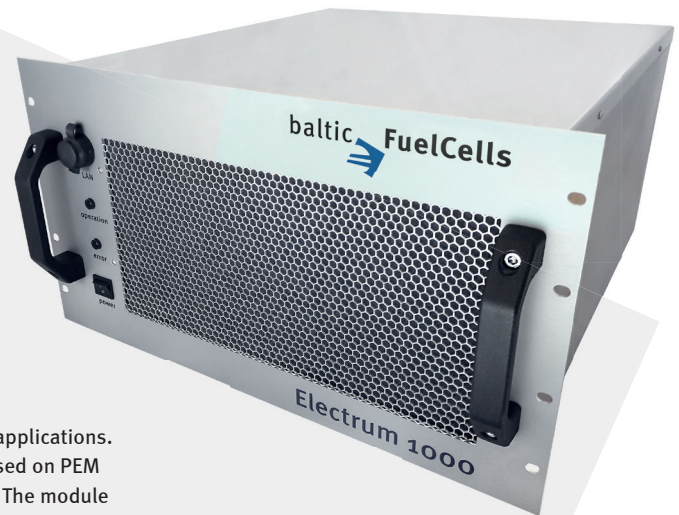


Electrum 1000 Back Up Power

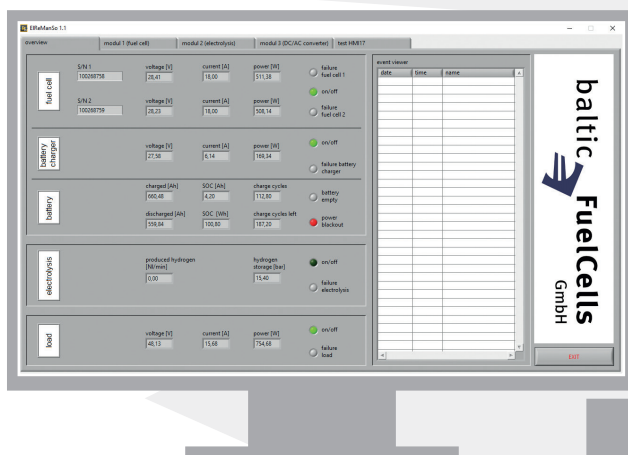
- ⇒ PEM fuel cell system
- ⇒ remote monitoring/service
- ⇒ scalable for individual power demand



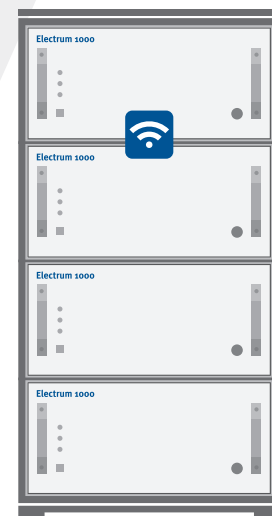
The **Electrum 1000 fuel cell system** is the ideal solution for critical back up power applications. It offers reliable power supply and high system efficiency. The system's core is based on PEM fuel cell stacks from **balticFuelCells** and provides an output of 1 kW electric power. The module is built with an enclosed and robust housing. An optimized form factor enables easy integration in 19" systems. The **Electrum 1000** uses a fully integrated power management system allowing the customer to monitor and control the system at any given time.

technical data

	Electrum 1000-24	Electrum 1000-48	Electrum 1000-AC
fuel cell type		PEM (Proton Exchange Membrane)	
nominal voltage	24 V DC	48 V DC	-
voltage range	20.5 - 27.5 V DC	40.5 - 55 V DC	110 - 230 V AC
electr. current	40 A (at nominal power)	20 A (at nominal power)	4.5 A (at 230 V AC)
operating temperature		5 °C - 45 °C	
efficiency		45 % at 1000 W	
media		hydrogen 3.0 (dry), ambient air	
H ₂ consumption		appr. 11 sl per min	
H ₂ inlet pressure		2 - 20 bar	
dimensions (w x h x l)		482 mm x 244 mm x 500 mm	
net weight	appr. 15 kg	appr. 17 kg	appr. 20 kg
response time		immediate	



The Electrum 1000 can be remotely monitored and controlled via software.



Integration in standard rack systems